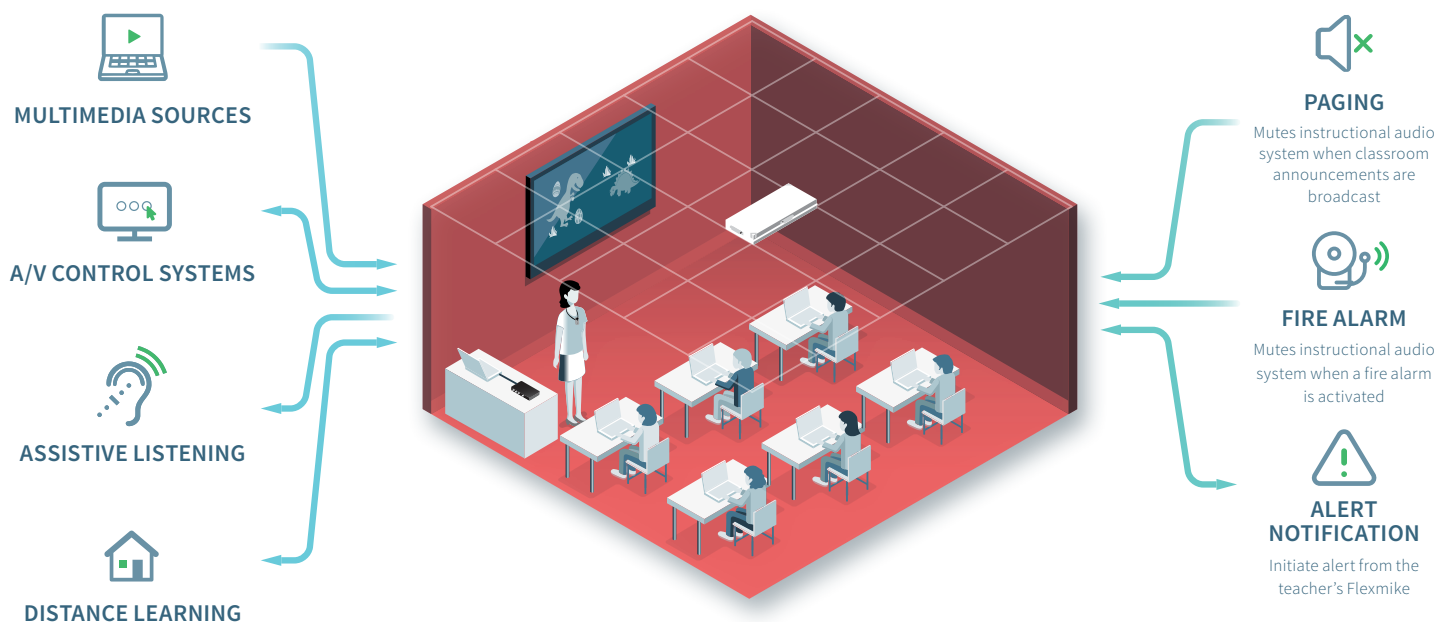


Instructional audio is at the center of connected classrooms

Lightspeed instructional audio systems provide clear and even distribution of voice and multimedia throughout the classroom, creating better access to learning.

Our installed and ceiling-mounted systems connect with life-safety systems, ensuring building-wide communications are never missed.



LIGHTSPEED INSTRUCTIONAL AUDIO DELIVERS THE BEST PERFORMANCE AND VERSATILITY

Lightspeed delivers the best distribution of intelligible sound throughout the room and wireless connectivity for media sources, all with no audio dropout, and no interference with Wi-Fi networks or other technology. Systems grow with your instructional needs, supporting all types of student-centered and small group learning.

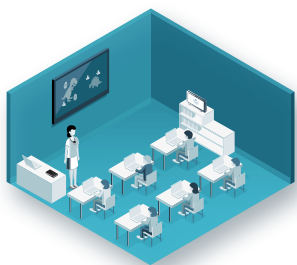
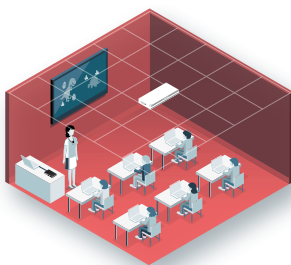


TABLE-TOP SYSTEMS

Lightweight, portable,
no installation



CEILING-MOUNTED SYSTEMS

Easy-to-install, full-range
audio for media-rich classrooms



INSTALLED SYSTEMS

Amplifier with traditional
ceiling speakers

There's an whole-class audio system for every classroom



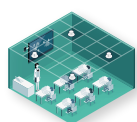
Redcat® TABLE-TOP SYSTEMS

Redcat is a breakthrough in instructional audio that combines the ease of an all-in-one system with the advanced capabilities of Access Technology.



Topcat® CEILING-MOUNTED SYSTEMS

Topcat's hybrid speaker design delivers superior audio quality of voice and multimedia. All-in-one design combined with wireless audio integration makes installation simple and cost effective for both new construction and existing classrooms.



975 INSTALLED SYSTEMS

The 975 ensures audio clarity of teachers, students and multimedia in any instructional space in the school. It also interfaces with your existing life-safety solutions.



ACCESSORIES AND COMPONENTS TO CUSTOMIZE YOUR SYSTEM

Flexmike and Sharemike

Flexmike is an easy-to-use and comfortable teacher microphone that includes volume controls, charging cradle, and a convenient, magnetic clasp lanyard. Sharemike is designed for student pass-around use so that all students can clearly be heard in the classroom.



Media Connector

This compact device serves as a hub for integrating all your classroom multimedia: computers, interactive displays, tablets, smartphones, and more.



T3 Microphones

Lightspeed's T3 Flexmike or T3 Sharemike with tap-to-talk functionality allows students to simply tap a button and begin speaking into their microphone.



Activate

Activate and Pods allow teachers to listen to small group collaboration, revealing critical insights in instruction. Teachers are able to monitor each group, reinforce and redirect when needed.



Mobile Connector

This Bluetooth microphone pairs with your mobile device or laptop and is compatible with a wide variety of video conferencing and recording applications to support lesson capture and live video conferencing.



Access Link™

Access Link adds a wireless microphone for the teacher to virtually any amplifier and speaker. It works within any room configuration and at long distance. Just as importantly, it virtually eliminates interference with other classroom technology.

