

STANDARD REGISTRATION



FLEXMIKE REGISTRATION (OTHER REGISTERED COMPONENTS IN PLACE)

(Particularly valuable when Multimike is not easily accessible)

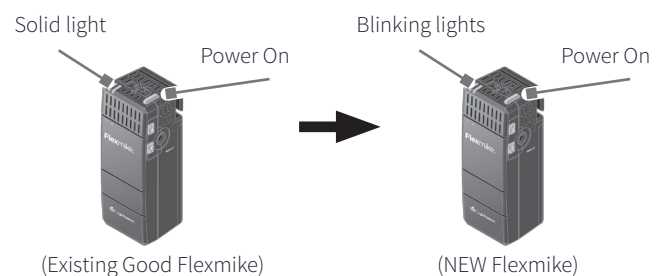
Note: Multimike systems do not use MIC 2 status lights.

For users adding a second Flexmike or replacing a lost or malfunctioning Flexmike.

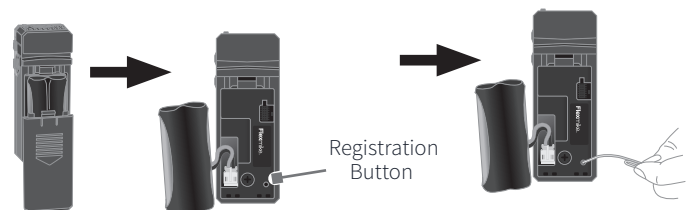
1. Start with the Multimike plugged in and powered on.
2. If replacing a Flexmike, make sure the malfunctioning Flexmike is powered off.



3. If a other Flexmikes, Sharemikes or a Media Connector is present, power them on and wait until each has a solid blue light ("Ready").
4. Power on the new Flexmike. The microphone 1 light should start blinking.
5. Open the new Flexmike battery compartment and pull the battery out (leaving it plugged in) to reveal the registration button.



6. Use another registered functional component (existing Flexmike, Sharemike or Media Connector) to trigger the registration function in Multimike.
 - Using a paperclip with the end straightened out, press and hold the registration button for 3 seconds inside the functioning Flexmike. This triggers registration in the Multimike and the Multimike's #1 amber light will begin blinking.
7. Briefly press the registration button on the new or replacement Flexmike. The #1 blue light will start blinking alternately.



- After several seconds, the #1 light on the Multimike will turn solid and the #1 light on the Flexmike will remain blinking, then turn solid.



- The registration is complete. You can begin speaking into the new Flexmike to verify there is audio.
- Place system ID number (attached to the Multimike Quickstart Guide) on the new Flexmike.

NOTE: if at any point, the Multimike or Flexmike lights begin blinking rapidly, that indicates a registration error. Turn the new Flexmike off and repeat steps 4-9.

[illegible]

MULTIMIKE REGISTRATION GUIDE

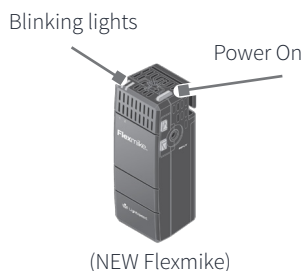
STANDARD REGISTRATION

REPLACING A FLEXMIKE (NO OTHER REGISTERED COMPONENTS IN PLACE)

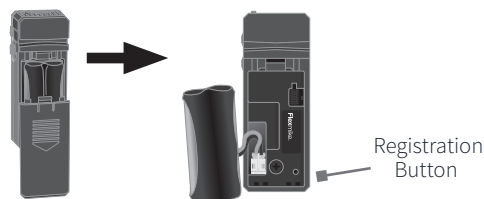
Note: Multimike systems do not use MIC 2 status lights.

For users replacing a lost or malfunctioning Flexmike.

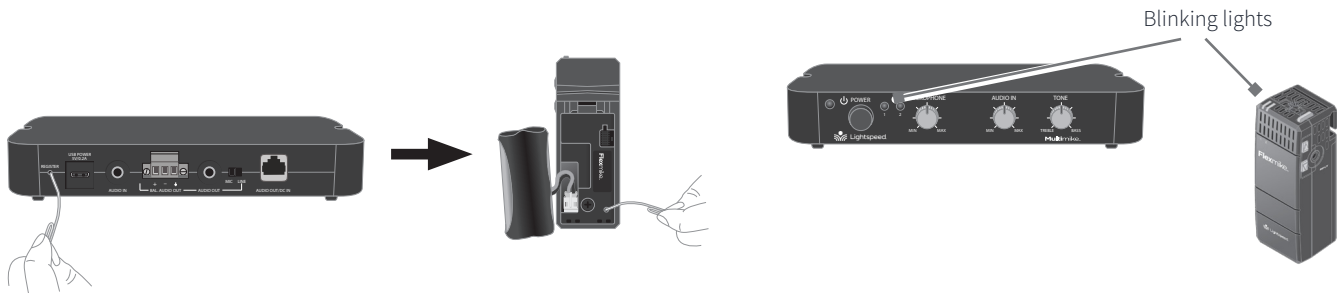
1. Start with the Multimike plugged in and powered on.
2. If replacing a Flexmike, make sure the malfunctioning Flexmike is powered off.
3. Power on the new Flexmike. Both microphone 1 and 2 blue lights should start blinking.



4. Open the Flexmike battery compartment and pull the battery out (leaving it plugged in) to reveal the registration button.



5. Using a paperclip with the end straightened out, briefly press the registration button on the back of the Multimike. The 1 and 2 lights will begin blinking on the Multimike.
6. Briefly press the registration button on the Flexmike. The 1 and 2 lights will start blinking alternately.



7. After several seconds, the #1 light on the Multimike will turn solid and the #1 light on Flexmike will remain blinking, then turn solid.
8. The registration is complete. You can begin speaking into the new Flexmike to verify there is audio.
9. Place system ID number (attached to Multimike Quickstart Guide) on the new Flexmike.

NOTE: if at any point, the Multimike or Flexmike lights begin blinking rapidly, that indicates a registration error. Turn the new Flexmike off and repeat steps 4-9.



(Particularly valuable when Multimike is not easily accessible)

For users adding a Sharemike or replacing a lost or malfunctioning Sharemike.

- NTS IN PLACE)
-
- Solid light
- Power On
- (Existing Good Flexmike)

-
- Diagram illustrating the registration button and power on indicator on the microphone. The registration button is located on the side of the microphone, and the power on indicator is located near the top of the microphone.

-

- ultimike.
remike. The Sharemike's
-
- Blinking lights

-
- A black rectangular audio interface with a microphone attached. The front panel features a 'POWER' button, a 'LINEPHONE' switch, and three meters labeled 'AUDIO IN', 'METER', and 'TONE'. The 'LightSpeed' logo is on the left. A label 'Solid lights' with a pointer indicates the microphone.

[illegible]

NOTE: if at any point, the Multimike or Media Connector lights begin blinking rapidly, that indicates a registration error. Unplug the Media Connector, then repeat steps 3-8.