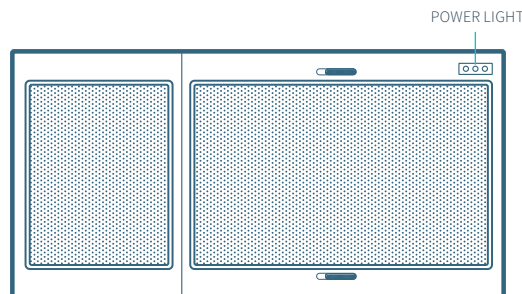


Topcat® Cascadia

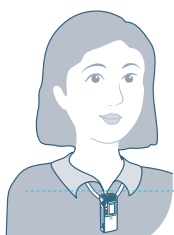
Networked Instructional Audio System



POWER STATUS

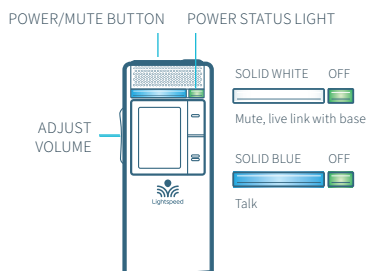
When the Topcat Cascadia is powered and ready to use, the Power light will glow white.

USING THE CLEARMIKE



Remove microphone from charger. Press the mute button to unmute, hold near your mouth and begin speaking.

ALIGN WITH COLLARBONE



USING THE SHAREMIKE

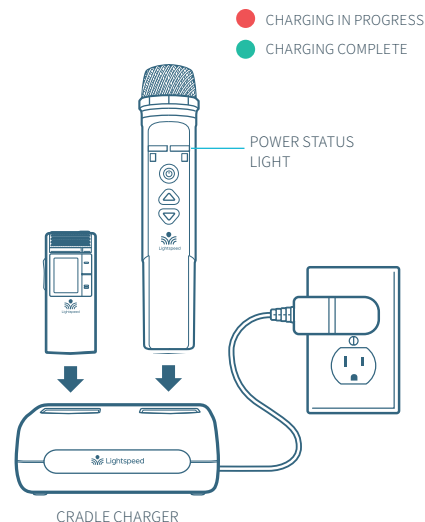


Remove microphone from charger and press the mute button to begin speaking.



CHARGE MICROPHONES NIGHTLY

- Place the microphones into the cradle charger.
- The Power Status light will glow red when it is charging.
- It takes about 5-6 hours to fully charge the battery.
- When charging is complete, the Power Status light will glow green.



CLEARMIKE OPERATION (default screen shown)

NOTE: Alert functions only available if integration is connected/enabled during setup.

BATTERY INDICATOR
(Full, Half, Empty)

MUTE INDICATOR/
VOLUME

MIC NUMBER
(M1 OR M2)

PROGRAMMABLE ALERT FUNCTIONS

- **BLANK:** No function
- **CALL:** Initiate call
- **HELP:** Request help
- **CHECKIN:** Check-in during emergencies

PROGRAMMABLE BUTTON 1
(Press and hold for 2 seconds)

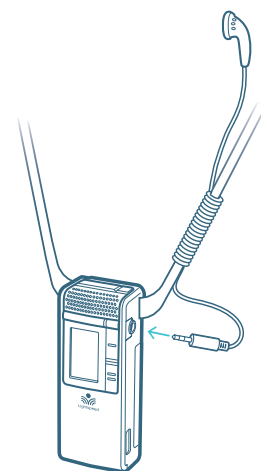
PROGRAMMABLE BUTTON 2
(Press and hold for 2 seconds)

EMERGENCY ALERT
BUTTON (RED)
Press and hold
2 seconds to
activate alert

HOW TO PLACE A CALL FROM YOUR CLEARMIKE

NOTE: Function only available if feature was enabled during initial setup.

1. Plug earbud into the 3.5mm jack on the microphone.
2. Insert earbud into ear.
3. Push and hold the button on the microphone with a Call label for 2 seconds.
4. Display will change to "Calling".
5. When call connects display will change to "Call in progress".
6. Press "Cancel" to hang up call.

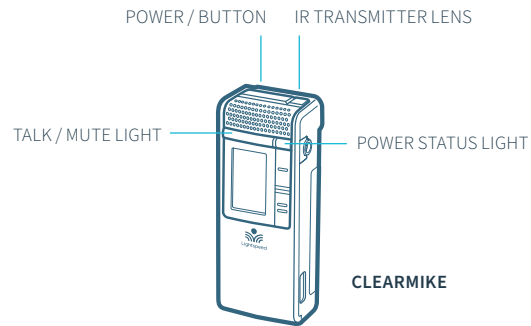


PAIRING MICROPHONES TO THE TOPCAT CASCADIA



Your system is shipped with microphones and base units pre-paired for quick and easy use. If you ever need to pair new components, follow the pairing process below.

PLEASE NOTE: Microphones should be out of the charger while pairing.



1 POINT CLEARMIKE AT TOPCAT CASCADIA

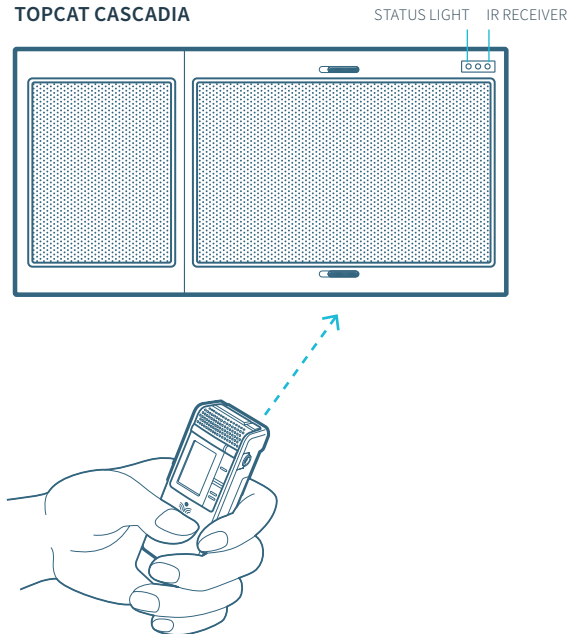
From a powered off state, point the IR transmitter lens toward the Topcat Cascadia.

2 PRESS AND HOLD POWER BUTTON

Press and hold the power button for 5 seconds until the Talk/Mute light starts flashing blue and white. The Status light on the Topcat Cascadia will also start flashing blue and white.

3 CONFIRM STATUS

When complete, the Status light on the Topcat Cascadia will turn blue, the Talk/Mute light on the microphone will be white, and the display on the microphone will say "Pair Success".



BLUETOOTH PAIRING TO CONNECT TO OTHER AUDIO SOURCES

1 SET UP YOUR OTHER AUDIO SOURCE

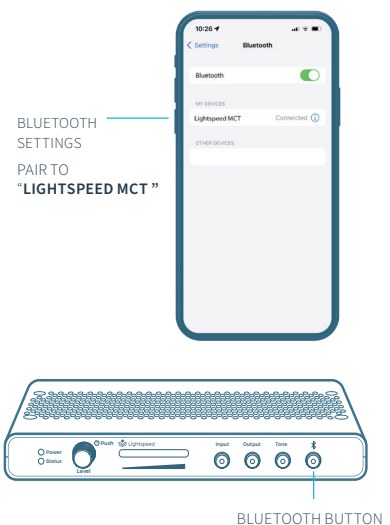
On your personal device, make sure your bluetooth setting is on and in the search mode.

2 PUT MEDIA CONNECTOR IN PAIRING MODE

Press and hold Bluetooth button for 3-5 seconds until status light starts blinking blue to be discovered by your personal device.

3 PAIR TO YOUR DEVICE

Locate LS_MCT on your personal device and complete pairing process.



INSTALLATION GUIDE

For installation instructions, go to www.lightspeed-tek.com/support/TCC-installation-guide/ (or scan the QR code).



USER MANUAL

For complete operating instructions, go to www.lightspeed-tek.com/TCC-usermanual (or scan the QR code).

QS0736US01-2



81-TCC-B